

## SKYRAY INSTRUMENT PRODUCTS CATALOGUE

Energy Dispersive X-ray Fluorescence Spectrometer (XRF)

Wavelength Dispersive X-ray Fluorescence Spectrometer (XRF)

Inductively Coupled Plasma Emission Spectrometer (ICP)

On-stream Slurry Analyzer (OSA)

Gas Chromatograph (GC)

Liquid Chromatograph (LC)

High-frequency Infrared Carbon-Sulfur Analyzer (CS)

Atomic Fluorescence Spectrometer (AFS)

(Spark) Optical Emission Spectrometer (OES)

Atomic Absorption Spectrometer (AAS)

Gas Chromatograph Mass Spectrometer (GC-MS)

Liquid Chromatograph Mass Spectrometer (LC-MS)

Inductively Coupled Plasma Mass Spectrometer (ICP-MS)

Laser Spectrometer (GALAS)

Electrochemical Analyzer Series

Colorimetry Analyzer Series



## Corporate Profile

- Jiangsu Skyray Instrument Co., Ltd. is a Hi-tech corporation with proprietary intellectual property, with registered capital amounting to around 25 million USD.
- It has two wholly-funded subsidiaries: Beijing Bandwise Technology Development Co., Ltd. and Shenzhen Skyray Instrument Co., Ltd.
- Our head office is situated in the scenic new & hi-tech industrial development zone "KSND", Kunshan, Jiangsu Province.
- Our company specializes in the R&D, production and sales of analytical and measuring instruments in Spectroscopy, Chromatography and Mass Spectroscopy fields.
- We have full product range, providing solutions for environmental protection and safety, industrial testing and analysis, and other fields.
- Skyray Instrument is honored with "Outstanding Private Scientific and Technological Enterprise in China", "Jiangsu Province Hi-tech Enterprise", "Jiangsu Province Software Enterprise" and "Jiangsu Province Technology-Innovative Enterprise" and is selected as "Zero2IPO - Venture 50" and "Jiangsu Province Spectral Analyzing Instrument Engineering Research Center".
- We have the world's top-level technology and R&D teams.
- Our series products X-ray Fluorescence Spectrometer have been given the title of "Hi-tech Products of Jiangsu Province".
- Our biggest strength is providing tailor-made solutions according to customer's needs.
- Our products have been sold to 115 countries and regions, such as U.S., Germany, Russia, Japan, Brazil and India, etc.
- We have above 150 distributors and after-service stations throughout the world.
- Skyray Instrument announced its initial public offering in Growth Enterprise Market, Shenzhen Stock Exchange on January 25th, 2011. (stock code: 300165)







## International network



Our products have been exported to 115 countries and regions, accounting for over 30% of our company's total output value.

## Energy Dispersive X-ray Fluorescence Spectrometer

### EDX600 Precious Metal Analyzer



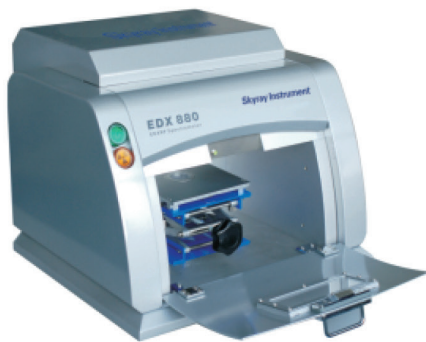
#### Application fields:

- Content determination of precious metals such as Au, Pt, Ag, etc. and jewelries;
- Thickness measurement of metal plating, content testing of plating solution and plating;
- Precious metal and jewelry processing industries;
- Bank, jewelry sales, testing institution and electroplating industry.

#### Features:

- Specialized testing of precious metal and plating thickness;
- Built-in Signal to Noise Enhancer improves signal processing capacity up to 25 times;
- Intelligent analytical software for precious metal matches well with the hardware;
- Arbitrary optional analysis and identification models;
- Independent matrix effect correction models;
- Multi-variable non-linear regression procedure.

### EDX880 Universal Precious Metal Analyzer



#### Application fields:

- Precious metal testing of jewelries;
- Measurement of precious metals and plating, etc.;
- Fields of X-ray Fluorescence analysis of precious metals.

#### Features:

- Large power X-ray tube;
- Super large window proportional counter;
- Large sample chamber, easy to operate and test large samples;
- Multiple gripping styles of samples (universal clamping kits, sample plate, plasticene), offering common tests, inner wall tests and irregular samples tests;
- Small collimator is suitable for testing minor area;
- Laser and camera positioning can locate testing spot visually and accurately. The laser shuts off automatically when testing starts, helping taking clearer pictures.

### EDX1800B RoHS Specialist



#### Application fields:

- RoHS test;
- Content determination of precious metals: Au, Pt and Ag, etc. and jewelries;
- Thickness measurement of metal plating, content determination of plating solution and plating;
- RoHS Directive industries, precious metal and jewelry processing industries;
- Bank, jewelry sales, testing institution and electroplating industry.

#### Features:

- Auto-switch of collimators and filters;
- Specialized RoHS test;
- Built-in Signal to Noise Enhancer improves signal processing capacity up to 25 times;
- Intelligent RoHS analytical software is specially developed, matching well with the hardware;
- Arbitrary optional analysis and identification models;
- Multi-variable non-linear regression procedure.



## Energy Dispersive X-ray Fluorescence Spectrometer

### EDX3000 Precious Metal Analyzer

**Application fields:**

- Au, Ag, Pt, Pd, Cu, Zn, Ni, etc.

**Features:**

- Signal to Noise Enhancer improves testing stability and accuracy;
- In-built high resolution camera, convenient for users to analyze samples at any time;
- Digital pulse processor handles data processing rapidly and accurately;
- Multi-variable non-linear regression procedure;
- Independent matrix effect correction models;
- Accurate measurement without standard sample;
- Real-time display of high definition graphs, care-free measurement.

### EDX3000D RoHS, Precious Metal and Full-element Tester

**Application fields:**

- Electronics and electric appliance, testing of hazardous elements in plastics, wood, glass and other materials;
- Electroplating industry.

**Features:**

- Software positions sample platform and minimum displacement is 0.01mm;
- Auto-switch of collimators and filters for different samples;
- Precise and automatic movable platform, adjusting sample position more accurately and easily;
- Signal to Noise Enhancer – proprietary product of Skyray Instrument, improves measurement certainty and accuracy greatly.

### Smart 100 Intelligent Precious Metal Analyzer

**Application fields:**

- Jewelry processing industry, jewelry stores, precious metal metallurgical plant, quality inspection authorities, analysis and test center, pawnshop and precious metal recovery.

**Features:**

- The most advanced detection technology — Silicon Drift Detector(X-SDD), with resolution as low as 125eV;
- The most advanced digital multichannel technology effectively improves output efficiency, realizes ultra high count rate, and guarantees the maximum effective counting rate reaches 30 kcps;
- Large power X ray tube and sophisticated collimation filter system provides higher excitation efficiency;
- Optical shutter system, no need to close high voltage when replacing sample; improves test efficiency and accuracy;
- 2D movable sample platform – supports image coordinated control, multi-point continuous test;
- Tiny sample detection – minimum 0.2mm.

# Energy Dispersive X-ray Fluorescence Spectrometer

## EDX3600B Full-element Specialist



### Application fields:

- Steel and non-ferrous industries, cement testing and mineral aggregate analysis.

### Features:

- Ultra high resolution SDD detector – Skyray proprietary technology, reduces element interference greatly and makes hazardous element testing more accurate;
- Vacuum pumping system reduces the impact of air to light element and improves light element testing;
- Automatic lifting system of sample chamber top cover and switch system of collimators and filters make the instrument more user-friendly and easier to operate.

## EDX3600H Non-halogen Specialist



### Application fields:

- Non-halogen test, full-element analysis, RoHS test and plating measurement;

### Features:

- US halogen test highly efficient X-ray tube;
- Specially-developed accessory for halogen element testing (especially chlorine);
- S100 detector: good energy linearity, energy resolution and energy spectrum characteristics, high P/B ratio;
- Low-energy X-ray excitation sample, good excitation effect on Cl, Br and other light elements;
- Intelligent vacuum pumping system shields the influence of air and extends the testing range greatly;
- Automatic spectrum stabilizer ensures working consistency of the instrument.

## EDX6000B Full-element Tester of Multiple Samples



### Application fields:

- Cement testing, steel and nonferrous metal testing, mineral aggregate analysis and RoHS test.

### Features:

- Thermoelectric-cooling UHRD detector instead of liquid nitrogen cooling detector;
- Built-in Signal to Noise Enhancer improves signal processing capacity up to 25 times;
- Vacuum pumping system improves the analysis of low-content light element;
- Auto-switch of collimators and filters for different samples;
- Arbitrary optional analysis and identification models;
- Independent matrix effect correction models;
- Multi-variable non-linear regression procedure.



## Energy Dispersive X-ray Fluorescence Spectrometer

### EDX Portable-I Portable Multi-functional Tester



#### Application fields:

- Hydrological survey, plating measurement, plating solution analysis, geographic prospecting and archeological study.

#### Features:

- Integrated miniature end-window X-ray tube, large-area Si-Pin detector, high signal-to-noise ratio electronic unit, enable the tester with equivalent performance to desk-top X-ray Fluorescence Spectrometer;
- Sample chamber is in sealed round structure with good X-ray shielding capability;
- Four groups of changeable filters, suitable for both full-element analysis and RoHS test with excellent results from testing different samples according to the matrix materials.

### Genius XRF Series Handheld XRF Spectrometer



Genius 1000 XRF Handheld Precious Metal Analyzer

Genius 3000 XRF Handheld Hazardous Elements Analyzer

Genius 5000 XRF Handheld Alloy & Stainless Steel Analyzer

Genius 5000L XRF Handheld Alloy Analyzer - Light Element Reinforced

Genius 7000E XRF Economical Handheld Mineral Analyzer

Genius 7000 XRF Standard Handheld Mineral Analyzer

Genius 7000L XRF Handheld Mineral Analyzer - Light Element Reinforced

Genius 9000 XRF Handheld Soil Heavy Metal Analyzer

#### Application fields:

- In-field online analyses of various elements during raw material inspection, process control and finished product inspection, the identification of metallic materials reliability and alloy number, on-site detection of heavy metals in soil, in-situ multi-element analyses in the wild, etc.

#### Features:

- Small, easy to carry, it supports handheld test;
- It provides rapid and nondestructive detection, delivering results within seconds;
- Introducing digital multi-channel technology to small X-ray spectrometer to provide better detection limit, higher stability and wider application.

### SUPER XRF1050



#### Application fields:

- Trace heavy metal analysis in environmental-protection soil, air and water, etc.;
- Trace element analysis of polymer membrane in manufacturing industry of metal products;
- Analysis of trace-amount hazardous element in precious metal industry;
- Analysis of trace elements in rare earth industry;
- Analysis of sub-nanometer plating thickness in metal plating industry;
- Analysis of trace harmful and hazardous elements of exported goods;
- Analysis of 8 metallic trace elements in toy exportation industry.

#### Features:

- Originally designed and developed for CPSIA;
- Analytical content ranges from 0.1 ppm to 99.9%;
- Unique X-ray excitation source improves testing accuracy greatly.

# Energy Dispersive X-ray Fluorescence Spectrometer

## Thick 800A Plating Thickness Analyzer



### Application fields:

- Measurement of plating thickness, element composition of plating and solutions.

### Features:

- 0.1 micro collimator can test the point;
- High-accuracy movable platform can precisely locate the test point with repeated accuracy less than 0.01  $\mu\text{m}$ ;
- Height positioning laser can auto locate the height;
- Positioning laser can precisely locate the facula to ensure the test point aligns to it;
- The mouse can control the movable platform; the mouse clicking position is the test point;
- High-resolution detector can improve the analysis accuracy;
- Excellent ray shielding;
- The test interface is protected by high sensitivity sensor.

## Thick 8000 Plating Thickness Analyzer



### Application fields:

- Metal plating thickness and content analysis (electroplating industry, precious metal industry, PCB industry etc.)

### Features:

- Excellent sample observation system;
- Advanced image identification;
- Easy detection of sample with deep groove;
- Four micro-focus collimators allowing automatic switch;
- Double safeguard procedures to realize seamless anticollision;
- Large area high resolution detector, effectively reducing detection limit and improving test accuracy;
- Automatic intelligent control mode, one-click operation;
- Automatic self-check and reset when starting up.

## EDX 9000 XRF Spectrometer



### Application fields:

- Mainly applied in RoHS directive industries, precious metals and jewelries processing industries; banks, jewelry shops and test institutes; electro-plating industries.

### Features:

- The most advanced detection technology — Silicon Drift Detector(SDD), with resolution as low as 125eV;
- The most advanced digital multichannel technology effectively improves output efficiency, realizes ultra high count rate, and guarantees the maximum effective counting rate reaches 30 kcps;
- Large power X ray tube and sophisticated collimation filter system provide higher excitation efficiency;
- Optical shutter system. no need to close high voltage when replacing sample; improves test efficiency and accuracy;
- 2D movable sample platform – supports image coordinated control and multi-point continuous test;
- Tiny sample detection – minimum 0.2mm.



## Energy Dispersive X-ray Fluorescence Spectrometer

### EHM-X100 Environmental Heavy Metal Analyzer



#### Application fields:

- Air quality monitoring;
- Feature analysis of air particles;
- Atmospheric background measurement;
- Environment appraisal and permission;
- Positioning and tracing of pollution source;
- Pollution forecast and early warning.

#### Features:

- Perfect combination of the advanced X-ray Fluorescent (XRF) non-destructive testing technology and atmosphere automatic deposit technology, complying with USA EPA Method IO-3.3.
- Optionally equipped with various particulate matter cutters, realizing measurements of heavy metal particles with different aerodynamic sizes.
- Precise concentration detection of up to 30 heavy metals such as Pb, Cd, Cr, As etc., with detection sensitivity unit in  $\mu\text{g}/\text{m}^3$ ; the measurable heavy metal range can be expanded.
- The core analyzer utilizes international standard 19" cabinet which can be installed either on mobile monitoring vehicle or on the stand rack of atmosphere auto-monitoring station.
- With 20 years accumulation of XRF technology, industrial grade electrical design and lightning protection, the analyzer is of high operational reliability and stability, supports failure-free operation in 24 hours for 365 days, and also has functions of intelligent fault diagnosis and self-troubleshooting.
- Low background detecting with stray light-free design and automatically changeable filters;
- In-built calibration module calibrates wavelength and intensity automatically, with calibration frequency can be set arbitrarily.
- Internal standard calibration source for Pb, Cd, Cr, As, Mn, etc.(customized) can realize automatic quality control and alarm.
- Mass flow controller and multi-dimensional temperature sensor precisely control the sampling flow rate; automatic standard flow meter is equipped to realize flow self-calibration.
- It supports various data transmission modes like RS232/485, USB, GPRS, ADSL, Ethernet etc., realizing remote transmission, control and inspection of operation parameters, status and data;
- With application of the advanced hierarchical modular design, the system possesses functions like data setting, calibration, saving, display, query, analysis and communication.
- Professional anti-radiation treatment guarantees no radiation leakage during measurement, which has passed the inspection and certification of relevant national departments.

## Energy Dispersive X-ray Fluorescence Spectrometer

### EDX3200S PLUS Sulfur Analyzer



#### Application fields:

- Petrochemical industry, crude oil extraction and the analysis of solids and liquids.

#### Features:

- Small and Elegant in appearance, it can conduct test in vehicle or laboratory;
- Side window W target X-ray tube with high excitation efficiency; large area SDD detector is of good heat dissipation which ensures the stability and efficiency of test;
- Tiny sealed helium charging sample chamber, saving gas consumption and reducing cost;
- Standard design of sample cup allows simple sampling and eliminates sample preparation; it can be used repeatedly, which minimizes cup consumption;
- Bottom lighting design avoids the test errors caused by sample volatilization and change of test distance, which greatly increases test accuracy;
- Multiple X-ray shielding design ensures the safety of operators;
- One-key operation provides precise test results, which is convenient and rapid.

## Wavelength Dispersive X-ray Fluorescence Spectrometer

### WDX200 Classic Multi-channel X-ray Fluorescence Spectrometer



#### Application fields:

- X-ray Fluorescence technology is rapid, accurate and non-destructive. X-ray Fluorescence Analytical Instrument can be applied in such fields as (composition analysis of elements from Na to U and compounds): electronic appliances (RoHS test), jewelries, precious metal and plating, toy security (EN71-3), building materials (cement, glass, ceramic), metallurgy (steel, non-ferrous metals), petroleum (trace elements S, Pb, etc.), chemical industry, geology and mining, commodity inspection, quality control and human trace element detection, etc. WDX200 is widely applied for macro analysis and micro analysis in colleges and research institutes.

### WDX400E New Multi-channel X-ray Fluorescence Spectrometer



#### Application fields:

- Building material (cement, glass, ceramic, etc.), steel, nonferrous metal, mining industry, geology, chemical industry, petroleum, quality inspection and commodity inspection.

#### Features:

- a. it can reach adequate analysis accuracy with smaller power and equivalent test time;
- b. prolonged service life of X-ray tube;
- c. decreased failures of high voltage supply;
- d. reduced maintenance cost;
- e. it applies fixed channel to eliminate wearing of gonio meter;
- f. fast and non-destructive analysis of powder sample or bulk sample;
- g. fast analysis of powder tablet, glass fuse piece and bulk materials.



## Inductively Coupled Plasma Emission Spectrometer

### ICP 2060T Inductively Coupled Plasma Emission Spectrometer



#### Application fields:

- Rare earth, geological, metallurgic, chemical, environmental, petrochemical industries, clinical medicine, semi-conductor, food, biological sample, criminal science, agricultural research etc.

#### Features:

- Over 70 elements can be measured;
- Fast analysis, analyzing 5-8 elements per minute;
- Simultaneous analyses of multiple elements;
- Excellent detection limits, at ppb level for most elements, and even 0.7ppb for Ba.

## On-stream Slurry Analyzer

### OSA100 On-stream Slurry Analyzer

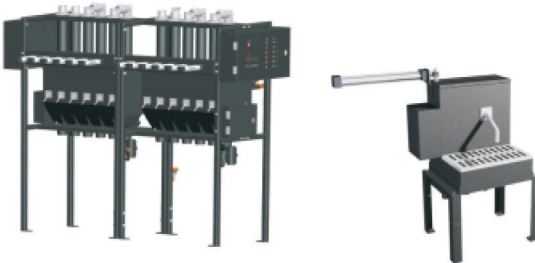


#### Application fields:

- Nonferrous metal, metallurgy and mineral processing industries, etc.

#### Features:

- Automatic mineral processing: stable production, reduced production cost, increased recovery percent of mineral processing, improved on-site management, maximizing the economic value of the ore;
- The system applies modular design with integrated functions and compact structure. Wide extended range of the flow pass can meet the demand of mines of different scale, and perform process automation control;
- Real-time monitoring of key sections during production provides the latest data and variation trend of metal grade for operators, further guiding the production;
- Typical and new samples help fast and accurate analysis;
- Safe and radiation-free;
- Easy to operate and maintain.



## Gas Chromatograph

### GC-5400 Gas Chromatograph



#### Application fields:

- Quality control in chemical, medicine and food;
- Hygiene and quarantine, environmental protection, quality inspection, oil, petrochemicals, legal examination and agriculture.

#### Features:

- High-accuracy dual stabilized gas circuit system;
- It applies advanced communication interface, realizing network management of gas chromatograph in the laboratory and sharing of analytical data;
- Brand-new microcomputer temperature control system ensures high temperature-control accuracy, stability and strong anti-interference;
- In-built high-resolution 24 digit AD circuit with baseline saving and deduction functions realizes high-accuracy acquisition of chromatographic data.

## Liquid Chromatograph

### LC-310 Liquid Chromatograph



#### Application fields:

- Food safety, medicine analysis, environmental protection, hygiene and quarantine, agriculture, forestry, fishing, animal husbandry, manufacturing, petrochemicals, quality inspection, research and education, irrigation system, etc.

#### Features:

- Digitized intelligent-control liquid chromatographic system;
- Reciprocating dual-plunger parallel pump with improved stability and endurance;
- Optical path applies precise positioning structure and heat insulation installation technology: high precision, minimum drift and short stabilization time;
- It is predominant in all technical indexes, comparable to foreign popular LCs.

## High-frequency Infrared Carbon-Sulfur Analyzer

### CS-188 High-frequency Infrared Carbon-Sulfur Analyzer



#### Application fields:

- Steel, ferroalloy, ferrosilicon, ore, rare earth, coke, etc.

#### Features:

- Separated structure design of high frequency combustion part and infrared testing part;
- Gas control system adopts standard metal connected clips with simple gas circuit and perfect sealing performance, which can continually analyze 100,000 samples without error;
- Specified back flushing design reduces the need to clean burner;
- High precision gas mass flow controller (MFC), free from the impact of external factors like temperature and pressure;
- Infrared testing equipment adopts our unique integral electro-optical design. With structural ingenuity and durability, its reliability and stability reach J level(military) standard.



## Atomic Fluorescence Spectrometer / Optical Emission Spectrometer / Atomic Absorption Spectrometer

### AFS200T Atomic Fluorescence Spectrometer



#### Application fields:

- Geology, environment, metallurgy, food, biology, medicine, agriculture and plants, light industry and cosmetics, etc.

#### Features:

- Analysis range of element: As, Sb, Bi, Hg, Se, Te, Pb, Sn, Ge, Zn, Cd, etc.;
- Detection limit: As, Sb, Bi  $\leq 0.01$  ng/mL, Hg  $\leq 0.001$  ng/mL;
- Accuracy:  $\leq 1\%$ , linear range: more than 3 orders of magnitude;
- Non-dispersive optical system: simple structure, simultaneous measurement of two elements at most;
- Automatic control of lamp current, negative high voltage and rpm of peristaltic pump.

### OES1000 Optical Emission Spectrometer



#### Application fields:

- Used in quick quantitative analysis of ferrous metal and nonferrous metal composition;
- A necessary tool to produce sound metal products;
- Satisfy the R&D, process control, incoming inspection and product sorting in ferrous metal and nonferrous metal industry.

#### Features:

- Simultaneously analyze 32 channels within about 50 seconds;
- It has a single spectrometer chamber which facilitates maintenance;
- The original analysis program calibrates collective effect and spectral line interference;
- Certified reference material is used to calibrate and standardize working curves, thus ensuring the accuracy of analysis;
- The spark source is compact, which effectively reduces electromagnetic interference and improves instrument's stability;
- High-quality vacuum optical system;
- Good temperature persistence and anti-shock performance.

### AAS Series Atomic Absorption Spectrometer



#### AAS 6000 Flame AAS

#### AAS 9000 Integrated AAS

#### Application fields:

- Geology, minerals, metallurgy, steel, non-ferrous metals;
- Environmental analysis: air, water quality, soil and solid wastes;
- Petrochemical industry and light industrial products, crude oil and additional products;
- Food, biomedicine and health products;
- Building materials (glass, ceramic, paints, etc.).

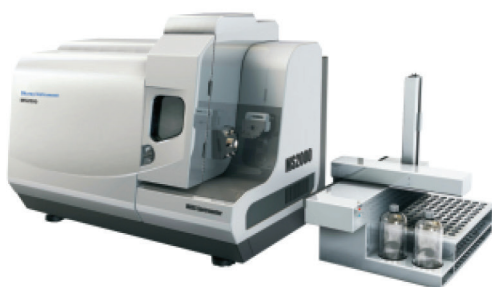
#### Features:

- C<sub>2</sub>H<sub>2</sub> analysis and flame measurement: full reflection, corrected aberration;
- Highly automated and full automatic operation;
- 8 element lamps, shortened lamp switching time;
- Safety protection of gas circuit guarantees safer operation;
- 230nm grating blazed wavelength, enhanced sensitivity of ultra-violet zone;
- 1800g/mm grating density, optimized resolution.



## Mass Spectrometer Series

### ICP-MS 2000 Inductively Coupled Plasma Mass Spectrometer



#### Application fields:

- Environment field: drinking water, seawater, water resource, food, hygiene and disease control, good inspection, etc.
- Semiconductor field: high pure metal, high pure reagent, ultratrace impurity of Si chip, photoresists;
- Pharmaceutical and physiological analysis field: medical research on hair, blood, serum, urine sample, biological tissues, e.g., testing Pb in whole blood;
- Nuclear industry: nuclear fuel radioisotope, pollution of primary cooling water, etc.
- Other filed: such as chemical industry, petrochemical, geology, etc.

#### Features:

- Quick analysis, simple operation, high sensitivity, low background noise, good interference shielding effect, easy to maintenance;
- One-button plasma setting makes plasma optimization more convenient with excellent reproducibility;
- Advanced plasma shielding technology greatly improves sensitivity and reduces the detection limit of elements with low mass number, reaching ppt level;
- It has special mobile connector structure, which enables to replace, install and dismantle sampling cone and skimmer cone under vacuum condition. It's convenient for daily maintenance;
- The new hexapole collision cell improves efficiency of ion transmission and eliminates the interference of polyatomic ion; No need to switch between digital and analogue mode; it is computer controlled, with dynamic linearity range reaching 9 orders of magnitude;
- The new type vacuum chamber structure has no wire connection;
- Each module applies dissymmetric and plug-in installation.

### LC-MS 1000 Liquid Chromatograph Mass Spectrometer



#### Application fields:

- LC-MS is a necessary analytical tool for organism analysis lab, drug and food laboratory, production process control, quality control department, etc.

#### Features:

- Quick scan speed (maximum 10000 amu/s, bar chart);
- Wide scan range (10-1100amu);
- Provide positive and negative mode switch;
- High detection sensitivity (10 pg reserpine, S/N $\geq$ 50:1);
- High software integration (LC high pressure pump, auto sampler, thermostat, UV detector, mass spectrum control and data process integrated in the software);
- Powerful auto calibration and tuning function;
- Dual-language interface (Chinese and English).



## Mass Spectrometer Series

### GC-MS 6800 Gas Chromatograph Mass Spectrometer



#### Application fields:

- Industry: textile, electricity&electronics, plastics, cosmetics.
- Food safety: pesticide residue, fragrance, additive, food packaging
- Environmental protection: air, water, soil, solid waste.
- Pharmaceutical industry: pharmaceutical factory, drug test.
- Petrochemical industry: refinery, chemical plant.
- Public security organ: explosives, drug analysis, physical evidence.

#### Features:

- GC system equipped with electronic pressure/flow control system (EFC/EPC); High efficient EI filament provides high electron emission efficiency;
- Quadrupole quality analyzer with pre-filter reduces quadrupole pollution; high energy dynode electron multiplier ensures good sensibility;
- Vacuum system composed of imported mechanical and turbo molecular pump guarantees system's stability and reliability;
- Full scale vacuum gauge monitors vacuum state in real time; self protection system guarantees the safety of operator and key parts under urgent conditions; RF power digital compensation technology ensures better sensitivity and resolution in full mass range;
- The software "ChemAnalyst" controls auto sampler, GC and MS; data acquisition and transmission are realized by high-speed network card; full scan (SCAN) and selective ion monitoring (SIM) modes are available; support manual and automatic tuning; quick display of total ion current(TIC) and mass spectrogram;
- Skyray Instrument is the only legal distributor authorized by NIST in China Mainland, which guarantees the latest version of NIST spectrum database and free online upgrade;
- Data process software searches target compound in NIST2011 spectrum database based on the mass spectrogram of sample and displays searching results which includes retention times, structural formula and standard mass chromatograms and confirms the standard and real abundance of ions. Users can make accurate qualitative and quantitative analysis.

## We Skyray Make Precision Instruments Only

• Spectroscopy • Chromatography • Mass Spectrometry

**ILGAZA**

MÜHENDİSLİK HİZMETLERİ VE DANIŞMANLIK A.Ş.

Asmalımescit Mah. Korsan Çıkmazı Akdeniz Apt. No: 2/1 34430 Beyoğlu, İstanbul - Türkiye

Telefon: 0 212 251 51 82

Web: [www.ilgaza.com](http://www.ilgaza.com) E-mail: [info@ilgaza.com](mailto:info@ilgaza.com)